




Split Systems





Our commitment to quality, service, research and development has helped us gain a leading position in today's marketplace in heating, cooling and air conditioning for the home or office.

#worksforme

Contents



Why Choose Mitsubishi Electric?	4
--	---



Product Line-up	6
------------------------	---



Wall-Mounted

MSZ-LN Series	8
MSZ-EF Series	10
MSZ-AP Series	12



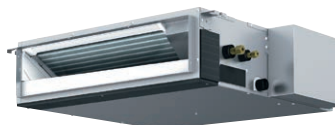
Floor Standing

MFZ-KJ Series	14
---------------	----



Ceiling-Cassette

SLZ Series	16
------------	----



Ceiling-Concealed

SEZ Series	17
------------	----

Controls	18
-----------------	----

Wi-Fi Control	19
----------------------	----

Functions	20
------------------	----

Specifications	22
-----------------------	----





Why Choose Mitsubishi Electric?

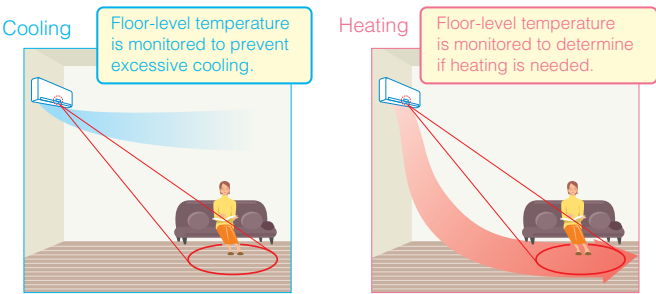
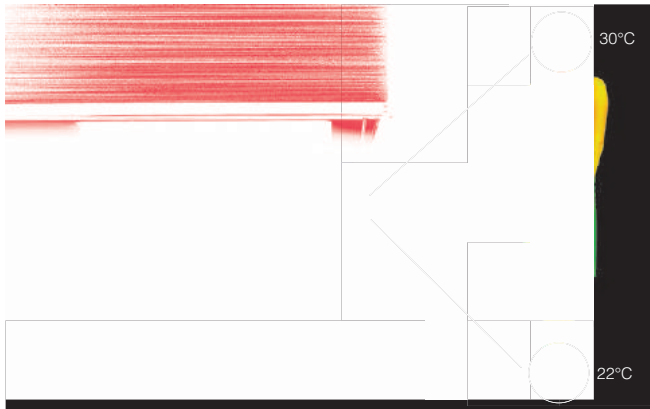
As a leading company in the industry, Mitsubishi Electric has a proud history in the manufacturing and supply of leading edge electrical and electronic equipment for both domestic and commercial use. Our efforts to make indoor life more comfortable began in 1921, with the introduction of our first electric fan which became an instant hit. Some 10 years later we began to manufacture coolers, which were just as popular.

Our commitment to quality service, research and development has helped us gain a leading position in today's marketplace in a wide variety of areas including heating, cooling and air conditioning. Mitsubishi Electric's 'today technology' provides controlled comfort wherever you live, work and relax.

Whether it's consistent heating and cooling for the home or office, Mitsubishi Electric offers you state-of-the-art technology that is quiet, simple to use, energy efficient and above all, reliable.

3D i-See Sensor

Mitsubishi Electric strive for the perfect balance of performance, reliability, low power consumption and a long operational life span for all of our products. The 3D i-See Sensor is an infrared sensor that measures the temperature at distant positions, while moving from left to right. The airflow speed and temperature are adjusted to prevent over-heating/cooling, thereby helping reduce consumption of excessive electricity. (LN Model only)



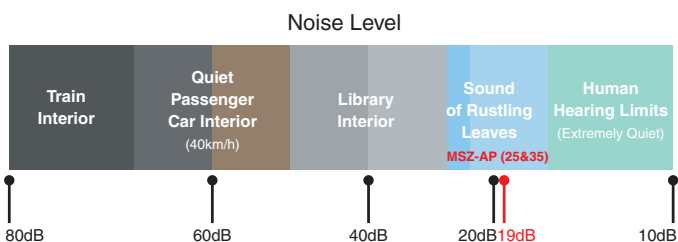
Economic Operation

Impressively low operating cost is a key advantage of inverter air cutting-edge electronics and mechanical technologies to achieve a synergistic effect that enables improvements in heating/cooling efficiency.



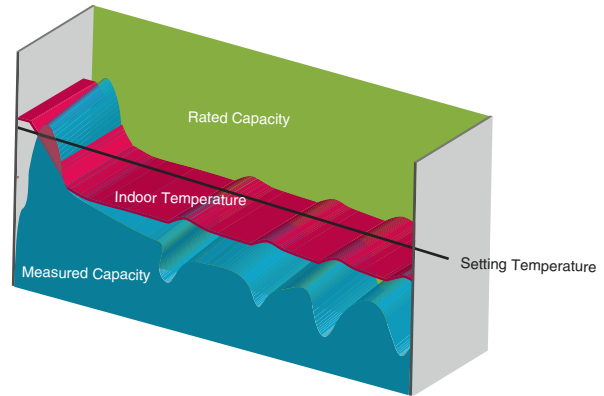
Quiet Operation

We recognise that noise affects comfort, so we constantly work to make our air conditioners as quiet as possible. With improvements to our fan blades combined with grille shape to our outdoor unit, it's even quieter when in low noise mode. We want you to feel the comfort, not hear it.



Inverter Technology

Mitsubishi Electric inverter technologies ensure superior performance including the optimum control of operation frequency. Optimum power is applied in all heating/cooling ranges and maximum comfort is achieved while reducing energy consumption.



Flexible Choice

Mitsubishi Electric air conditioners range from wall-mounted, floor-standing, ceiling-concealed, ceiling-cassette to ceiling-suspended units, which are suitable for your application.



Ultimate Comfort and Modern Design

Mitsubishi Electric provide attractive air conditioners which range in a variety of designs to suit diversified needs; with stylish lines for the living room and quiet operation for the bedroom, our air conditioners provide advanced air control which is smart and sophisticated.

Peace of Mind

Mitsubishi Electric's air conditioners range used in residential applications are covered by a full 5 year parts and labour warranty. Delivering quality performance year in year out.

See website for terms and conditions.



Product Line up

WALL-MOUNTED

MSZ-LN Series

2.5kW	3.5kW	5.0kW	6.0kW	7.1kW	8.0kW
✓	✓	✓	✓	-	-

- » Heating & Cooling
 - » Inverter Technology
 - » Double Vane
 - » 24 Hour Timer
- » Natural Flow
 - » Quiet Operation
 - » Plasma Quad Plus Filter
- » 3D i-See Sensor
 - » Dual Barrier Coating
 - » Built-in Wi-Fi
 - » Weekly Timer
- » Auto Change Over
 - » 3 Colours Available Red, Black & Pearl White



MSZ-LN Series

MSZ-EF Series

2.5kW	3.5kW	4.2kW	5.0kW	6.0kW	7.1kW	8.0kW
✓	✓	✓	✓	-	-	-

- » Heating & Cooling
 - » Inverter Technology
 - » Auto Vane
 - » 24 Hour Timer
- » 3 Colours Available White, Silver & Black
 - » Nano Platinum Filter
 - » Weekly Timer
- » Wi-Fi Connectable*
 - » Flat Panel
 - » Auto Restart
 - » Auto Change Over



MSZ-EF Series

MSZ-AP Series

2.5kW	3.5kW	4.2kW	5.0kW	6.0kW	7.1kW	7.8kW
✓	✓	✓	✓	✓	✓	✓

- » Heating & Cooling
 - » Inverter Technology
 - » R32 Refrigerant
 - » Quiet Operation
 - » i-Save Mode
- » Blue Fin Condenser
 - » Vertical & Horizontal Vanes
 - » Wi-Fi Connectable*
 - » Auto Change Over
- » Demand Response Capable
 - » Weekly Timer
 - » 24 Hour Timer
 - » Dual Barrier Coating
- » Anti-Allergy Enzyme Filter (Optional)



MSZ-AP Series

FLOOR-STANDING

MFZ-KJ Series

2.5kW	3.5kW	5.0kW	6.0kW	7.1kW	8.0kW
✓	✓	✓	✓	-	-

- » Heating & Cooling
 - » Pure White
 - » Quiet Operation
- » Wi-Fi Connectable*
 - » Anti-Allergy Enzyme Filter
 - » i-Save Mode
- » 24 Hour Timer
 - » Auto Change Over
 - » Multi-Vane Flow
- » Auto Restart



MFZ-KJ Series

CEILING-CASSETTE

SLZ-KF Series

2.5kW	3.5kW	5.0kW	6.0kW	7.1kW	8.0kW
✓	✓	✓	✓	-	-

- » Heating & Cooling
 - » Quiet Operation
 - » 2x2 Compact Size
 - » Long-Life Filter
- » Fresh-Air Intake
 - » Weekly Timer
 - » Auto Change Over
 - » Auto Restart
- » Wi-Fi Connectable*
 - » Auto Vane
 - » Pure White



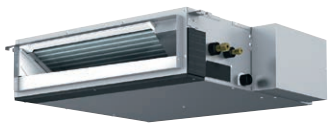
SLZ Series

CEILING-CONCEALED

SEZ Series

2.5kW	3.7kW	5.1kW	5.6 kW	6.5kW	8.0kW
✓	✓	✓	✓	✓	-

- » Auto Restart
 - » Heating & Cooling
 - » Quiet Operation
- » 200mm Compact Size
 - » Air Cleaning Filter
 - » Weekly Timer
- » Auto Change Over
 - » Wi-Fi Connectable*



SEZ Series

*Optional upgrade adapter required per unit.



LN Series



The LN range is a wall mounted system that blends energy efficiency with a sleek and ultra modern design. The new stylish design is available with a range of deep, rich colours Ruby Red, Onyx Black and Pearl White, resulting in a premium quality feel. With a wide range of features including Built-In Wi-Fi, Plasma Quad Plus Filtration System, 3D i-See Sensor and low GWP R32 refrigerant, the MSZ-LN is the pinnacle of luxury air conditioning.

Small Rooms

Unit Dimension: (w) 890 x (d) 233 x (h) 307 mm

MSZ-LN25VGV/B/R-A1

Cooling Capacity: 2.5kW (min 1.0kW~max 3.5kW)

Cooling Efficiency-EER: 5.10/AEER: 5.07

Heating Capacity: 3.2kW (min 0.8kW~max 5.4kW)

Heating Efficiency-COP: 5.42/ACOP: 5.39

MSZ-LN35VGV/B/R-A1

Cooling Capacity: 3.5kW (min 0.8kW~max 4.0kW)

Cooling Efficiency-EER: 4.07/AEER: 4.05

Heating Capacity: 4.0kW (min 1.0kW~max 6.3kW)

Heating Efficiency-COP: 4.88/ACOP: 4.86

Medium Rooms

Unit Dimension: (w) 890 x (d) 233 x (h) 307 mm

MSZ-LN50VGV/B/R-A1

Cooling Capacity: 5.0kW (min 1.0kW~max 6.0kW)

Cooling Efficiency-EER: 3.62/AEER: 3.61

Heating Capacity: 6.0kW (min 1.0kW~max 8.2kW)

Heating Efficiency-COP: 4.05/ACOP: 4.04

MSZ-LN60VGV/B/R-A1

Cooling Capacity: 6.1kW (min 1.4kW~max 6.9kW)

Cooling Efficiency-EER: 3.53/AEER: 3.52

Heating Capacity: 6.8kW (min 1.8kW~max 9.8kW)

Heating Efficiency-COP: 3.78/ACOP: 3.77

LN Series units are available in:



Ruby Red

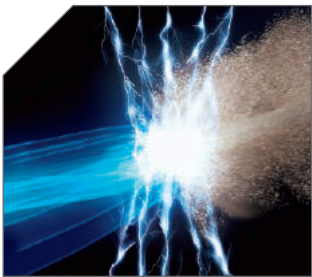


Onyx Black



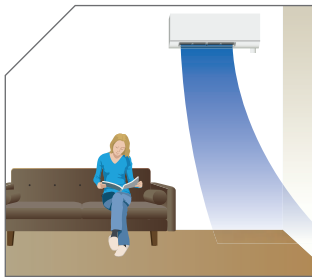
Pearl White

FEATURES



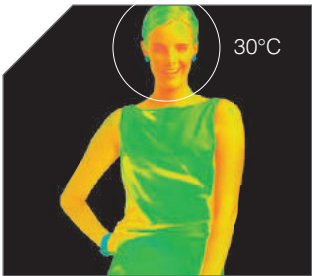
Plasma Quad Plus Filter

The Plasma Filter System is an advanced, multi-stage filtration system designed to effectively reduce contaminants such as allergens, viruses and bacteria, ensuring the circulation of fresh, clean air back into the room.



Indirect / Direct Airflow

The indirect airflow setting can be used when the flow of air feels too strong or direct. For example, it can be used during cooling to avert airflow and prevent body temperature from being excessively cool.



3D i-See Sensor

The LN Series is equipped with 3D i-See Sensor, an infrared-ray sensor that measures the temperature at distant positions. While moving to the left and right, eight vertically arranged sensor elements analyse the room temperature.



Dual Split Vane Technology

The unique dual split vane design allows airflow to be customised to suit different areas of the room, by independently directing air upwards, downwards or to the side.



Natural Flow

To create comfortable airflow, the most important aspect is that the flow of air feels natural. Mitsubishi Electric has created this solution using technology that freely and flexibly controls to mimic natural airflow.



Quiet Operation

We recognise that noise affects comfort, so we constantly work to make our air conditioners as quiet as possible. With improvements to our fan blades combined with grille shape to our outdoor unit, it's even quieter when in low noise mode. We want you to feel the comfort, not hear it.



Energy Efficient

Impressively low power consumption and quiet, yet powerful performance. Ensuring quality room comfort and energy savings, thereby reducing the consumption of excessive electricity.



Built-In Wi-Fi Control

Unlock the door to smarter cooling and heating for total home comfort. You can control and monitor your air conditioner from anywhere anytime via your smartphone, tablet or online account.

*1 To use Amazon Alexa to control your air conditioner, you will need an Amazon Echo device.

*2 To use Google Assistant to control your air conditioner, you will need a Google Home smart speaker.



Large windows and room volume are some of the factors that may effect the performance of the air conditioning unit.

LN SERIES FEATURES

- | | | | |
|------------------------|--------------------|-------------------------------|------------------------------|
| » Heating & Cooling | » Colour Selection | » Guaranteed Operating Range | » Direct/Indirect Airflow |
| » Inverter Technology | » Compact | Cooling at -10°C ~ 46°C | » Natural Flow |
| » Absence Detection | » 24 Hour Timer | Heating at -15°C ~ 24°C | » Plasma Quad Plus Filter |
| » Econo Cool | » Auto Restart | » Vertical & Horizontal Swing | » DC Inverter |
| » Auto/Double Vane | » Built-In Wi-Fi | » Auto Change Over | » Dual Split Vane Technology |
| » Dual Barrier Coating | » Weekly Timer | » 3D i-See Sensor | |



EF Series



The streamlined wall-mounted indoor units have eloquent clean lines, expressing sophistication and quality. Available in 3 stylish colours classic white, matte silver and glossy black to provide the best match scenario for diverse interior designs while simultaneously ensuring quality room comfort.

Small Rooms

Unit Dimension: (w) 885 x (d) 195 x (h) 299 mm

MSZ-EF25VE2W/B/S

Cooling Capacity: 2.5kW (min 1.2kW~max 3.4kW)
Cooling Efficiency-EER: 4.59/AEER:4.56

Heating Capacity: 3.2kW (min 1.1kW~max 4.2kW)
Heating Efficiency-COP: 4.57/ACOP: 4.55

MSZ-EF35VE2W/B/S

Cooling Capacity: 3.5kW (min 1.4kW~max 4.0kW)
Cooling Efficiency-EER: 3.85/AEER:3.83

Heating Capacity: 4.0kW (min 1.8kW~max 5.5kW)
Heating Efficiency-COP: 4.19/ACOP: 4.17



Medium Rooms

Unit Dimension: (w) 885 x (d) 195 x (h) 299 mm

MSZ-EF42VE2W/B/S

Cooling Capacity: 4.2kW (min 0.9kW~max 4.6kW)
Cooling Efficiency-EER: 3.28/AEER: 3.27

Heating Capacity: 5.4kW (min 1.4kW~max 6.3kW)
Heating Efficiency-COP: 3.70/ACOP: 3.69

MSZ-EF50VE2W/B/S

Cooling Capacity: 5.0kW (min 1.4kW~max 5.4kW)
Cooling Efficiency-EER: 3.21/AEER: 3.20

Heating Capacity: 5.8kW (min 1.6kW~max 7.5kW)
Heating Efficiency-COP: 3.71/ACOP: 3.70



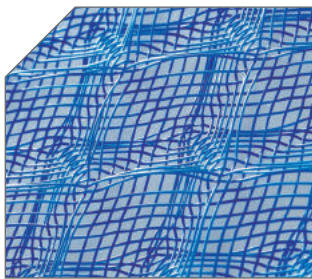
Large windows and room volume are some of the factors that may effect the performance of the air conditioning unit.

FEATURES



Stylish Design

Developed to complement modern interior room decor, MSZ-EF Series is available in three colours glossy black, matte silver and classic white. Specially chosen to blend in naturally wherever installed.



Platinum Filter

The Nano Platinum Deodorising Filter reduces airborne bacteria while improving air quality.

The optional Electrostatic Anti-Allergy Enzyme Filter effectively combats common allergens.



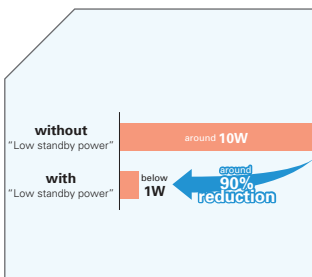
Energy Efficient

Impressively low power consumption and quiet, yet powerful performance. Ensuring quality room comfort and energy savings, thereby reducing the consumption of excessive electricity.



Quiet Comfort All Day

Mitsubishi Electric's advanced "Quiet Mode" fan speed setting provides peaceful operation as low as 21dB for 25/35 models. This unique feature makes the MSZ-EF series ideal for use in any situation.



Low Stand-By Power

Electrical devices consume electric power even when they are switched off or in standby mode. The EF Series units have a Low Standby Power of below 1 watt reducing the wasted power by around 90%.



Wi-Fi Control*1

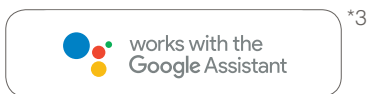
Unlock the door to smarter cooling and heating for total home comfort. You can control and monitor your air conditioner from anywhere anytime via your smartphone, tablet or online account.

*1 Optional upgrade adapter required per unit.

Requires an Internet connection and the App downloaded from the App Store or GooglePlay Store on your smartphone or tablet with the latest Operating System available.

*2 To use Amazon Alexa to control your air conditioner, you will need an Amazon Echo device.

*3 To use Google Assistant to control your air conditioner, you will need a Google Home smart speaker.



EF Series units are available in:



Glossy Black



Matte Silver



Classic White

EF SERIES FEATURES

- » Heating & Cooling
- » Inverter Technology
- » Econo Cool
- » Nano Platinum Filter
- » Auto Restart
- » 24 Hour Timer
- » Weekly Timer
- » Guaranteed Operating Range
Cooling at -10°C ~ 46°C
Heating at -15°C ~ 24°C
- » Auto Change Over
- » Electrostatic Anti-Allergy Enzyme Filter (Optional)
- » Self Diagnosis

AP Series



Mitsubishi Electric MSZ-AP series wall mounted split system is engineered for high performance and utilises a low GWP R32 refrigerant. Models range from 2.5 to 7.8kW so there is a capacity to suit most cooling and heating requirements around the home. It also features a new streamlined design to blend in with any decor.

Small & Medium Rooms

Unit Dimension: (w) 798 x (d) 219 x (h) 299 mm

MSZ-AP25VG(D*)

Cooling Capacity: 2.5 (min 1.1kW~max 3.6kW)
Cooling Efficiency-EER: 5.00/AEER: 4.97
Heating Capacity: 3.2kW (min 1.3kW~max 5.0kW)
Heating Efficiency-COP: 4.78kW/ACOP: 4.75

MSZ-AP42VG(D*)

Cooling Capacity: 4.2 (min 0.9~max 4.8kW)
Cooling Efficiency-EER: 3.53/AEER: 3.52
Heating Capacity: 5.4 (min 1.3~max 6.0kW)
Heating Efficiency-COP: 3.78/ACOP: 3.77

MSZ-AP35VG(D*)

Cooling Capacity: 3.5 (min 1.1kW~max 4.1kW)
Cooling Efficiency-EER: 4.02/AEER: 4.01
Heating Capacity: 3.7 (min 1.3kW~max 5.1kW)
Heating Efficiency-COP: 4.57/ACOP: 4.55

MSZ-AP50VG(D*)

Cooling Capacity: 5.0 (min 1.4kW~max 6.2kW)
Cooling Efficiency-EER: 3.79/AEER: 3.78
Heating Capacity: 6.0 (min 1.4kW~max 8.0kW)
Heating Efficiency-COP: 4.57/ACOP: 4.55



Large Rooms

Unit Dimension: (w)1100 x (d) 257 x (h) 325 mm

MSZ-AP60VG(D*)

Cooling Capacity: 6.0 (min 1.4kW~max 7.3kW)
Cooling Efficiency-EER: 3.77/AEER: 3.77
Heating Capacity: 6.8 (min 2.0kW~max 8.6kW)
Heating Efficiency-COP: 4.07/ACOP: 4.06

MSZ-AP80VG(D*)

Cooling Capacity: 7.8 (min 2.0kW~max 9.2kW)
Cooling Efficiency-EER: 3.31/AEER: 3.30
Heating Capacity: 9.0 (min 2.2kW~max 11.0kW)
Heating Efficiency-COP: 3.53/ACOP: 3.53

MSZ-AP71VG(D*)

Cooling Capacity: 7.1 (min 2.0kW~max 8.7kW)
Cooling Efficiency-EER: 3.53/AEER: 3.53
Heating Capacity: 8.0 (min 2.2kW~max 9.9kW)
Heating Efficiency-COP: 3.83/ACOP: 3.82



(D*) represents DRED enabled model. This is only available in QLD.

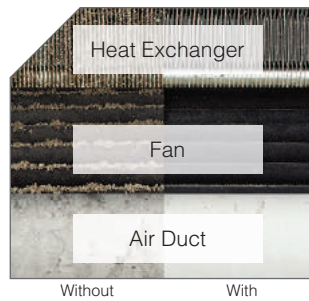
Large windows and room volume are some of the factors that may effect the performance of the air conditioning unit.

FEATURES



NEW Award Winning Design

The MSZ-AP Series has a uniform, streamlined design regardless of the size and model of the unit. The simple yet high-quality appearance is designed to blend in with any interior. When mounted, the units appear smaller due to the tapered bottom end.



NEW Dual Barrier Coating

Dual Barrier Coating reduces dust and greasy dirt from collecting in the air conditioner. Image shows a simulated comparison of dirt over 10 years, without and with Dual Barrier Coating.



Quiet Operation

A "Quiet Mode" setting has been added to the fan speed settings, ensuring super quiet operation as low as **18dB***. Perfect for the bedroom; it's so quiet you'll check to see if it's on.

*Model 25 in heating mode only.



Energy Efficient

Impressively low power consumption and quiet, yet powerful performance. Ensuring quality room comfort and energy savings, thereby reducing the consumption of excessive electricity.



NEW Vertical & Horizontal Vanes

New vertical and horizontal vanes are double the size of the previous model, allowing the airflow direction to be adjusted and improving airflow control effectively. These functions can be activated at the touch of a button on your remote controller.



Blue Fin Condenser

Anti-corrosion treatment has been applied to the heat exchanger of the outdoor unit. This coating inhibits corrosion of the aluminum fins; salt in the air causes this especially in coastal areas.

(Corrosion of the heat exchanger will affect the efficiency and performance of the AC).



R32 Refrigerant

R32 is a refrigerant with just one-third the global warming potential of R410A, meaning reduced risk of harm to the environment. R32 enables increased energy efficiency and is said to be the next generation in refrigerants.



Wi-Fi Control*1

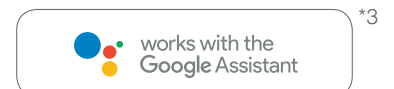
Unlock the door to smarter cooling and heating for total home comfort. You can control and monitor your air conditioner from anywhere anytime via your smartphone, tablet or online account.

*1 Optional upgrade adapter required per unit.

Requires an Internet connection and the App downloaded from the App Store or GooglePlay Store on your smartphone or tablet with the latest Operating System available.

*2 To use Amazon Alexa to control your air conditioner, you will need an Amazon Echo device.

*3 To use Google Assistant to control your air conditioner, you will need a Google Home smart speaker.



AP SERIES FEATURES

- » Heating & Cooling
- » Inverter Technology
- » Econo Cool
- » Auto Vane
- » Natural White
- » Demand Response Capable
- » Low Temperature Cooling
- » Weekly Timer
- » Auto Restart
- » Dual Barrier Coating
- » Auto Fan Speed
- » 24 Hour Timer
- » Auto Change Over
- » Vertical & Horizontal Vanes
- » Anti-Allergy Enzyme Filter (Optional)
- » Guaranteed Operating Range
Cooling at -10°C ~ 46°C
Heating at -15°C ~ 24°C

KJ Series

FLOOR STANDING UNIT



High capacity, simple, flat design in harmony with living spaces raises the value of your room to the next level.

Small Rooms

Unit Dimension: (w) 750 x (d) 215 x (h) 600 mm

MFZ-KJ25VE

Cooling Capacity: 2.5kW (min 0.5kW~max 3.4kW)
Cooling Efficiency-EER: 4.63/AEER: 4.62
Heating Capacity: 3.4kW (min 1.2kW~max 4.6kW)
Heating Efficiency-COP: 4.42/ACOP: 4.41

MFZ-KJ35VE

Cooling Capacity: 3.5kW (min 0.5kW~max 3.7kW)
Cooling Efficiency-EER: 3.89/AEER: 3.88
Heating Capacity: 4.3kW (min 1.2kW~max 5.8kW)
Heating Efficiency-COP: 3.91/ACOP: 3.90



Medium Rooms

Unit Dimension: (w) 750 x (d) 215 x (h) 600 mm

MFZ-KJ50VE

Cooling Capacity: 5.0kW (min 1.6kW~max 5.7kW)
Cooling Efficiency-EER: 3.57/AEER: 3.56
Heating Capacity: 5.8kW (min 2.2kW~max 8.2kW)
Heating Efficiency-COP: 3.87/ACOP: 3.86

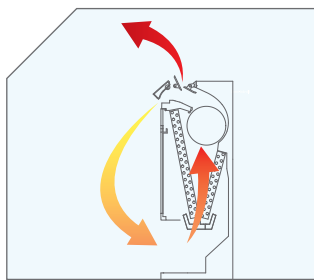
MFZ-KJ60VE

Cooling Capacity: 6.0kW (min 1.6kW~max 6.8kW)
Cooling Efficiency-EER: 3.42/AEER: 3.43
Heating Capacity: 6.8kW (min 2.2kW~max 9.1kW)
Heating Efficiency-COP: 3.60/ACOP: 3.59



Large windows and room volume are some of the factors that may effect the performance of the air conditioning unit.

FEATURES



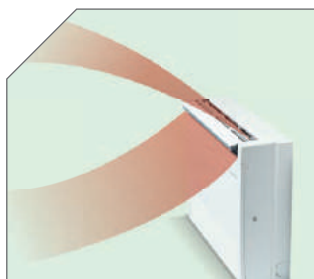
Rapid Heating Technology

MFZ Series ensures a comfortable room temperature is reached faster with Rapid Heating Technology. Warm air is blown out in a downward direction and then sucked back into the unit to quickly raise the temperature of the air being blown out.



Slim, Sophisticated Design

Floor consoles feature a new contemporary sleek design that harmonises with interiors.



Multi Flow Vane

A powerful blower allows distribution of air from the upper and lower air outlets. The result is a comfortable environment with an even temperature throughout the room. Three uniquely shaped vanes control the airflow and allow the freedom to customise comfort according to preferences.



i-Save mode

"i-Save" is a setting function that recalls the preferred (preset) temperature by pressing the i-Save button on the remote controller.



Wi-Fi Control*1

Unlock the door to smarter cooling and heating for total home comfort. You can control and monitor your air conditioner from anywhere anytime via your smartphone, tablet or online account.



*2



*3

*1 Optional upgrade adapter required per unit.

Requires an Internet connection and the App downloaded from the App Store or GooglePlay Store on your smartphone or tablet with the latest Operating System available.

*2 To use Amazon Alexa to control your air conditioner, you will need an Amazon Echo device.

*3 To use Google Assistant to control your air conditioner, you will need a Google Home smart speaker.



MFZ SERIES FEATURES

- » Heating & Cooling
- » Inverter Technology
- » Only 19dB (KJ 25/35)
- » Econo Cool
- » Nano Platinum Filter

- » Horizontal Auto Vane
- » Horizontal Swing
- » Pure White
- » Built-In Weekly Timer
- » 24 Hour Timer

- » Auto Restart
- » Guaranteed Operating Range
- Cooling at -10°C ~ 46°C
- Heating at -15°C ~ 24°C
- » Error Logs

- » Vertical Airflow
- » Easy Installation (with leveling plate)
- » Emergency Operation Switch
- » Anti-Allergy Enzyme Filter

SLZ Series

CEILING CASSETTE



Our compact, lightweight ceiling cassette units with 4-way airflow provide improved comfort by evenly distributing airflow throughout the entire room.

Small Rooms

Unit Dimension: (w) 570 x (d) 570 x (h) 208 mm
Panel Dimension: (w) 650 x (d) 650 x (h) 20 mm

Medium Rooms

Unit Dimension: (w) 570 x (d) 570 x (h) 208 mm
Panel Dimension: (w) 650 x (d) 650 x (h) 20 mm

SLZ-KF25VA3

Cooling Capacity: 2.5kW (min 1.5kW~max 3.2kW)
Cooling Efficiency-EER: 3.85/AEER: 3.73
Heating Capacity: 3.0kW (min 1.3kW~max 4.5kW)
Heating Efficiency-COP: 3.85/ACOP: 3.75

SLZ-KF35VA3

Cooling Capacity: 3.5kW (min 1.4kW~max 3.9kW)
Cooling Efficiency-EER: 3.68/AEER: 3.61
Heating Capacity: 4.0kW (min 1.7kW~max 5.0kW)
Heating Efficiency-COP: 3.70/ACOP: 3.36

SLZ-KF50VA3

Cooling Capacity: 5.0kW (min 2.3kW~max 5.2kW)
Cooling Efficiency-EER: 3.27/AEER: 3.21
Heating Capacity: 4.5kW (min 1.7kW~max 6.5kW)
Heating Efficiency-COP: 3.16/ACOP: 3.22

SLZ-KF60VA3

Cooling Capacity: 5.6kW (min 2.3kW~max 6.5kW)
Cooling Efficiency-EER: 3.20/AEER: 3.16
Heating Capacity: 6.0kW (min 2.5kW~max 7.4kW)
Heating Efficiency-COP: 3.19/ACOP: 3.15

FEATURES



Air Cleaning Filter

This built-in filter reduces dust and other particulates, keeping the air purified and deodorised. The long-life filter in SLZ Series air conditioners can be used for approximately 2,500 hours with simple maintenance.



New Design

The straight-line form introduced has resulted in a beautiful square design. Its high affinity ensures the ability to blend in seamlessly with any interior. The indoor unit is an ideal match for office and retail.

SLZ SERIES FEATURES

- » Heating & Cooling
- » PAM Control
- » Long Life (2,500 Hour Filter)
- » Fresh Air Intake
- » Pure White
- » Auto Vane
- » Vertical Swing
- » 12 Hour Timer
- » Auto Restart
- » Weekly Timer (PAR-33MAA)
- » Guaranteed Operating Range
Cooling at -10°C ~ 46°C
Heating at -15°C ~ 24°C
- » Optional M-NET Connection
- » 3D i-See Sensor (Optional)
- » Wi-Fi Control
(Optional upgrade adapter required per unit)
- » Self Diagnosis
(with wired R/C check code)
- » Error Logs

SEZ Series

CEILING-CONCEALED



Our concealed-ceiling unit has a reduced installation space height with impressively quiet operation. Comfort for the living room, bedroom and other living spaces.

Small Rooms

Unit Dimension: (w) 790 X (d) 700 X (h) 200mm - SEZ-KD25VA
Unit Dimension: (w) 990 X (d) 700 X (h) 200mm - SEZ-KD35VA

Medium Rooms

Unit Dimension: (w) 990 x (d) 700 x (h) 200 mm

Large Rooms

Unit Dimension: (w) 1190 x (d) 700 x (h) 200 mm

SEZ-KD25VA

Cooling Capacity: 2.5kW (min 1.5kW~max 3.2kW)
Cooling Efficiency-EER: 3.33/AEER: 3.21
Heating Capacity: 3.0kW (min 1.3kW~max 4.5kW)
Heating Efficiency-COP: 3.61/ACOP: 3.49

SEZ-KD35VA

Cooling Capacity: 3.7kW (min 1.4kW~max 3.9kW)
Cooling Efficiency-EER: 3.39/AEER: 3.31
Heating Capacity: 4.2kW (min 1.7kW~max 5.0kW)
Heating Efficiency-COP: 3.72/ACOP: 3.62

SEZ-KD50VA

Cooling Capacity: 5.1kW (min 2.3kW~max 5.6kW)
Cooling Efficiency-EER: 3.11/AEER: 3.05
Heating Capacity: 6.4kW (min 1.7kW~max 7.2kW)
Heating Efficiency-COP: 3.54/ACOP: 3.48

SEZ-KD60VA

Cooling Capacity: 5.6kW (min 2.3kW~max 6.3kW)
Cooling Efficiency-EER: 3.16/AEER: 3.11
Heating Capacity: 7.4kW (min 2.5kW~max 8.0kW)
Heating Efficiency-COP: 3.61/ACOP: 3.55

SEZ-KD71VA

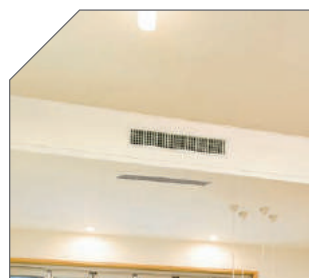
Cooling Capacity: 6.5kW (min 2.8kW~max 8.3kW)
Cooling Efficiency-EER: 3.16/AEER: 3.10
Heating Capacity: 8.1kW (min 2.6kW~max 10.4kW)
Heating Efficiency-COP: 3.72/ACOP: 3.66

FEATURES



Quiet Operation

Offering whisper-quiet operation at a hushed noise level of 23dB (SEZ-KD25/35), creating a calm and comfortable environment. So quiet you'll check to see if they're on.



Compact Ceiling-Concealed Units

With a slim size of 200mm in height the concealed unit fits easily and discreetly into ceiling spaces. Allowing you to create a high class interior.

SEZ SERIES FEATURES

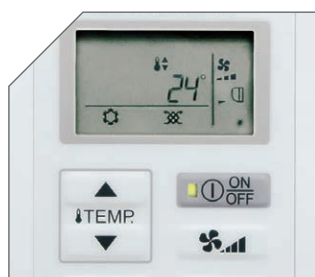
- » Heating & Cooling
- » Wi-Fi Control
(Optional upgrade adapter required per unit)
- » Weekly Timer (SEZ-VAQ)
(PAR-33MAA)
- » Guaranteed Operating Range
Cooling at -10°C ~ 46°C (KA25)
Cooling at -15°C ~ 43°C (KA50)
Cooling at -15°C ~ 46°C (KA60/71)
Heating at -15°C ~ 24°C
- » Optional M-NET Connection
- » Flare Connection
- » Error Logs
- » Auto Restart

Controls

HANDHELD CONTROLLERS & WALL MOUNTED CONTROLS

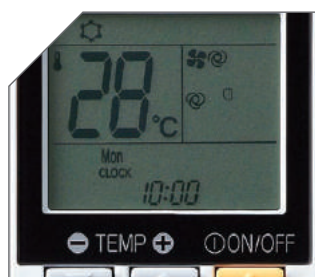
Making the most out of your air conditioner all starts with the controls, these allow you to create the comfort levels that match your demands.

As air conditioners are becoming more advanced, so are the controls, to allow accuracy and ease of use to maximise the functionality of your air conditioner. The availability of handheld controllers, wired wall mounted controller PAR-33MAA and Wi-Fi Control not only provide you with a wide variety of choice, but also allow optimised programming efficiency.



PAC-YT52CRA Controller

To simplify operation of the system, the range of controls has been limited to On/Off, mode, room temperature, fan speed and additional vane control for high walls, cassettes, and under ceilings units. The ability to sense the room ambient via the inbuilt thermostat. This means you are sensing the actual space temperature where the end user is.



PAR-SL100A-E Weekly Remote Controller

With an easy to read display and a variety of operating modes at the touch of a button. This controller features a weekly and 24 hour timer, On/Off timer to set operating times on a daily basis. The 'i-Save' mode recalls the preset temperature. This remote is standard for the AP Series, EF series and LN series.



PAR-33MAA 7 Day Wired Controller*

The wall mounted 7 day controller is an optional upgrade with the ability to connect to all Mitsubishi Electric systems listed in this brochure. The PAR-33MAA Controller allows you to program up to 8 stop/start patterns per day for up to 7 days at a time.

*Optional upgrade adapter required per unit.



PAR-CT01MAA Bluetooth* Touch Screen Controller

The full colour touch controller PAR-CT01MAA enables the control of both residential and commercial air conditioning applications. It has a customisable 3.5 inch colour LCD touch panel that makes it easy to use. Available in white or premium black finishes, suitable for almost any decor. Operation panels are easier to see and simple to use with big visible-sized icons. Logo images can also be displayed on the initial screen for more customisation.

Available in White or Premium Black.

*Available for PAR-CT01MAA-SB and PAR-CT01MAA-PB.



Control Your Comfort Anywhere, Anytime*¹

Wi-Fi
CONTROL¹

WI-FI CONTROL*¹

Wi-Fi Control unlocks the door to smarter heating or cooling, for total home comfort wherever you are.

This innovative technology connects your domestic high wall, floor mounted and ducted air conditioner to your smartphone, tablet or online account, giving you the freedom to fully control each unit on-the-go via an internet connection from anywhere in the world.

*¹ Optional upgrade adapter required per unit.

Requires an Internet connection and the App downloaded from the App Store or GooglePlay Store on your smartphone or tablet with the latest Operating System available.

*² To use Amazon Alexa to control your air conditioner, you will need an Amazon Echo device.

*³ To use Google Assistant to control your air conditioner, you will need a Google Home smart speaker.

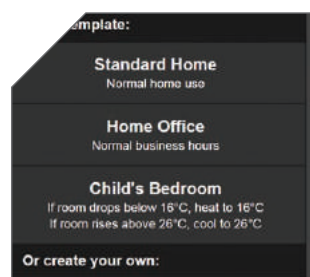
WI-FI FEATURES

- » View & control from anywhere in the world
- » Enhance energy savings
- » Set up 7 day weekly schedule
- » Wireless connection using WPS



Superior Customisation

This innovative technology places multiple functions of your air conditioner at your fingertips. Turning the unit On/Off, adjusting set temperature, changing mode, fan speed and airflow direction are all possible.



Develop Operating Rules

Tailor your system to always meet your needs. Unlock the full potential of your air conditioner, program your system to automatically turn On/Off at specific times, change settings, and develop temperature rules to ensure superior comfort day after day.



NEW Wi-Fi Voice Control with Amazon Alexa and Google Assistant

Mitsubishi Electric air conditioning systems connected with Wi-Fi Control*¹ are now also Amazon Alexa*² and Google Assistant*³ enabled! This means you can enjoy hands-free control.

FUNCTIONS

Energy Saving

3D i-See Sensor

The "3D i-See Sensor" monitors the whole room in sections and directs the airflow to areas of the room where the temperature does not match the temperature setting. For example when cooling the room, if the middle of the room is detected to be hotter, more airflow is directed towards it. This eliminates unnecessary heating/cooling and contributes to lower electricity costs.

DC Inverter

Inverter technology matches compressor speed to your indoor heating or cooling requirements. PAM (Pulse Amplitude Modulation) provides higher efficiency within the inverter by controlling the amount of power drawn.

Econo Cool Energy-Saving Feature

"Econo Cool" is an intelligent temperature control feature that adjusts the amount of air directed towards the body based on the air-outlet temperature. The setting temperature can be raised by as much as 2 degrees without any loss in comfort, thereby realising a 20% gain in energy efficiency. (Function only available during manual cooling operation.)

"i-Feel" Control

The "i-Feel" fuzzy-logic control memorises the most desirable temperature setting. If the "TOO WARM" or "TOO COOL" button on the remote controller is pressed, the system adds the choice to the control memory and adjusts the temperature so that the most comfortable temperature is provided. That temperature setting is used the next time the unit is turned on.

PAM (Pulse Amplitude Modulation)

PAM is a technology that controls the current waveform so that it resembles the supply voltage wave, thereby reducing loss and realising more efficient use of electricity. Using PAM control, 98% of the input power supply is used effectively.

Comfort

Auto Vane

The vane closes automatically when the air conditioner is not running, concealing the air outlet and creating a flat surface that is aesthetically appealing.

Swing (Vertical Vane)

The air outlet vane swings from side to side so that the airflow reaches every part of the room.

Swing (Horizontal Vane)

The air outlet vane swings up and down so that the airflow is spread evenly throughout the room.

Wide and Long Airflow

The wide and long airflow function is especially beneficial for large spaces, helping to ensure that air is well circulated and reaches every corner of the room.

Wide Airflow

This unique airflow system distributes air horizontally over a wide-ranging 150° in heating mode and 100° in cooling mode. Simply press the Wide Swing icon on the remote controller to select the desired airflow from seven different patterns.

Long Airflow

Use this function to ensure that the airflow circulates to areas far across the room. Press the Long Airflow icon on the remote controller to extend reach up to as far as 12 metres from the unit.

Dual Split Vane

The unique dual split vane design allows airflow to be customised to suit different areas of the room, by independently directing air upwards, downwards or to the side.

Air Quality

Air Cleaning Filter

The filter is charged with static electricity, enabling it to attract and capture dust particulates that regular filters don't.

Anti-Allergy Enzyme filter

The anti-allergy enzyme filter works to trap allergens such as molds and bacteria and decompose them using enzymes retained in the filter.

Catechin Filter

Catechin is a bioflavonoid by-product of green tea with both antiviral and antioxidant qualities. It also has an excellent deodorising effect, which is why Mitsubishi Electric uses the compound in its air conditioner filters. In addition to improving air quality, it prevents the spreading of bacteria and viruses throughout the room. Easily removed for cleaning and maintenance, when the filter is washed regularly the deodorising action is rated to last more than 10 years.

Electro Static Anti-Allergy Enzyme Filter

This function utilises both the air cleaning filter and anti-allergy enzyme filter.

Fresh-Air Intake

Indoor air quality is enhanced by the direct intake of fresh exterior air.

Nano Platinum Filter

The filter has a large capture area and incorporates nanometre-sized platinum-ceramic particles that work to kill bacteria and deodorise the circulating air. Better dust collection than conventional filters is also ensured.

Plasma Quad Plus Filter

Units are equipped with a pre-filter and two special filters that perform plasma air cleaning and plasma purification functions (Plasma Duo). The plasma system removes bad odors and bacterial particulates of micron and nanometre-size from the air.

Convenience

Ampere Limit Adjustment

Dipswitch settings can be used to adjust the maximum electrical current for operation. This function is highly recommended for managing energy costs.

*Maximum capacity is lowered with the use of this function.

Auto Changeover

The air conditioner automatically switches between heating and cooling modes to maintain the desired temperature.

Auto Restart

Especially useful at the time of power outages, the unit turns back on automatically when power is restored.

Auto Fan Speed Mode

The airflow speed mode adjusts the fan speed of the indoor unit automatically according to the present room conditions.

“i-Save” Mode

“i-Save” is a simplified setting function that recalls the preferred (preset) temperature by pressing a sinAPe button on the remote controller. Press the same button twice in repetition to immediately return to the previous temperature setting. Using this function contributes to comfortable waste-free operation, realising the most suitable air conditioning settings and saving on power consumption when, for example, leaving the room or going to bed.

Low-Temperature Cooling

Intelligent fan speed control in the outdoor unit ensures optimum performance even when the outside temperature is low.

On/Off Operation Timer

Use the remote controller to set the times for the air conditioner to turn On/Off.

Operation Lock

To accommodate specific-use applications, cooling or heating operation can be specified when setting the control board of the outdoor unit. A convenient option when a system needs to be configured for exclusive cooling or heating service.

System Control

M-Net Connection

Units can be connected to MELANS system controllers (M-NET controllers) such as the AE-200E.

MXZ Connection

Connection to the MXZ multi-split outdoor unit is possible.

PAR-33MAA Control

Units are compatible for use with the PAR-33MAA remote controller, which has a variety of management functions including a weekly timer.

*Optional upgrade adapter required per unit.

System Group Control

The same remote controller is capable of controlling the operational status of up to 16 refrigerant systems.

Wi-Fi Interface

Interface enabling users to control air conditioners and check operating status via devices such as personal computers, tablets and smartphones.

Optional upgrade adapter required per unit. (Excludes LN Series).

Installation & Maintenance

Cleaning-Free Pipe Reuse*

The application of pipe reuse technology such as Mitsubishi Electric's original hard alkyl benzene oil makes it possible to reuse the same piping, thereby allowing cleaning-free renewal of air conditioning systems that use R22 refrigerant.

*Cleaning-Free Pipe Reuse Technology specifically applies to piping which is contaminated with chlorine residue, iron particles and slime. These contaminants are typically found in which the previous system utilised R22 refrigerant. Cleaning-Free Pipe Reuse Technology cannot be used to clean pipes which contain foreign matter other than what can be generated from an operating air conditioner.

Error Log Function

Operation errors are recorded, allowing confirmation when needed.

Flare Connection

Flare connection to cooling pipe work is possible.

Dual Barrier Coating

Dual Barrier Coating reduces dust and greasy dirt from getting into the air conditioners, which can assist in creating a healthy and quiet environment.

Self-Diagnostic Function (Check Code Display)

Check codes are displayed on the remote controller or the operation indicator to inform the user of malfunctions detected.

SPECIFICATIONS

SERIES			Deluxe Wall Mounted MSZ-LN Series			
Model			MSZ-LN25VG/B/R MUZ-LN25VG-A1	MSZ-LN35VG/B/R MUZ-LN35VG-A1	MSZ-LN50VG/B/R MUZ-LN50VG-A1	MSZ-LN60VG/B/R MUZ-LN60VG-A1
Cooling	Nominal Total Cooling *1'	kW	2.5 (1.0-3.5)	3.5 (0.8-4.0)	5.0 (1.0-6.0)	6.1 (1.4-6.9)
	AEER/EER		5.07 / 5.10	4.05 / 4.07	3.61 / 3.61	3.52/3.53
	Star Rating		5.5	3.5	2.5	2.5
	Total Input [Min-Rated-Max]	kW	0.180-0.490-0.900	0.160-0.860-1.180	0.190-1.380-2.330	0.270-1.730-2.730
	Running Current [Rated]	A	2.5	4.1	6.3	7.8
Heating	Nominal Heating Capacity *1'	kW	3.2 (0.8-5.4)	4.0 (1.0-6.3)	5.4 (1.0-8.2)	6.8 (1.8-9.8)
	ACOP/COP		5.39 / 5.42	4.86 / 4.88	4.04 / 4.05	3.77 / 3.78
	Star Rating		6.0	5.0	3.5	3.0
	Total Input [Min-Rated-Max]	kW	0.8 - 3.2 - 5.4	1.0 - 4.0 - 6.3	1.0 - 6.0 - 8.2	1.8 - 6.8 - 9.8
	Running Current [Rated]	A	3.0	4.0	6.8	7.9
Airflow	Airflow (Cooling/Heating)	L/s	71-198 / 67-240	71-213 / 71-228	95-231 / 90-261	118-261 / 110-261
Indoor Unit	Dimensions [HxWxD]	mm	307 x 890 x 233	307 x 890 x 233	307 x 890 x 233	307 x 890 x 233
	Unit Weight	kg	15.5	15.5	15.5	15.5
	Noise Level SPL (PWL) in Cooling	dB(A)	19-23-29-36-42	21-23-29-36-42	28-31-25-39-42	30-33-26-40-43
	Noise Level SPL (PWL) in Heating	dB(A)	19-24-29-36-45	21-24-30-38-46	28-30-35-41-48	30-33-37-43-49
Outdoor Unit	Dimensions [HxWxD]	mm	550 x 800 x 285	550 x 800 x 285	714 x 800 x 285	880 x 840 x 330
	Weight	kg	35	35	40	55
	Noise Level SPL (PWL) in Cooling	dB(A)	46	49	51	55
	Noise Level SPL (PWL) in Heating	dB(A)	49	50	54	55
Electrical	Volt / Phase		240/1			
Refrigerant	Pipe Size (Gas) OD	mm	9.52 (3/8)	9.52 (3/8)	9.52 (3/8)	12.7 (1/2)
	Pipe Size (LIquid) OD	mm	6.35 (1/4)	6.35 (1/4)	6.35 (1/4)	6.35 (1/4)
	Max Pipe Run/Height	m	20/12	20/12	20/12	30/15
	Pre-Charged Refrigerant	kg	0.8 (7m)	1.15 (7m)	1.15 (7m)	1.45 (7m)
	Add. Charge	g/m	30	30	30	20
	Outdoor - Cooling	°CDB	-10 ~ 46			
	Outdoor - Heating	°CDB	-15 ~ 24			
MCA		A	9.6	10	14	16
Breaker Size		A	10	10	16	16

Notes:

*1 Nominal conditions cooling: EAT 27°CDB/19°CWB, Ambient 35°CDB. Rated conditions cooling: EAT. 24°CDB/17°CWB, ambient 35°CDB. Nominal conditions heating: EAT 20°CDB/15°CWB, Ambient 7°CDB/6°CWB.
*2 Rated Load Amps (RLA) is based on nominal conditions. Use Maximum Circuit Amps (MCA) for power supply infrastructure sizing etc.

(Rating Conditons)

Cooling: Indoor 27°C, D.B./19°C, W.B.
Outdoor 35°C, D.B./24°C, W.B.
Heating: Indoor 20°C, D.B./15°C, W.B.
Outdoor 7°C, D.B./6°C, W.B.



Mitsubishi Electric is constantly developing and improving its products. The company reserves the right to make any variation in the technical specification to the equipment described, or to withdraw or replace products without prior notification.

This is a guide only, please refer to the installation and service manuals to confirm the latest specifications or contact your local Mitsubishi Electric office.

SPECIFICATIONS

SERIES			Signature Wall Mounted MSZ-EF Series			
Model			MSZ-EF25VE2W/B/S MUZ-EF25VE	MSZ-EF35VE2W/B/S MUZ-EF35VE	MSZ-EF42VE2W/B/S MUZ-EF42VE	MSZ-EF50VE2W/B/S MUZ-EF50VE
Cooling Performance	Nominal Total Cooling *1 ¹	kW	2.5 (1.2-3.4)	3.5 (1.4-4.0)	4.2 (0.9-4.6)	5.0 (1.4-5.4)
	AEER/EER		4.56 / 4.59	3.83 / 3.85	3.27 / 3.28	3.20 / 3.21
	Star Rating		4.5	3	2	1.5
	Total Input [Min-Rated-Max]	kW	0.240 - 0.545 - 1.150	0.210 - 0.910 - 1.500	0.160 - 1.280 - 1.930	0.300 - 1.580 - 1.980
	Running Current [Rated]	A	2.9	4.2	5.7	6.9
Heating Performance	Nominal Heating Capacity * 1	kW	3.2 (1.1-4.2)	4.0 (1.8-5.5)	5.4 (1.4-6.3)	5.8 (1.6-7.5)
	ACOP/COP		4.55 / 4.57	4.17 / 4.19	3.69 / 3.70	3.70 / 3.71
	Star Rating		4.5	4	3.0	2.5
	Total Input [Min-Rated-Max]	kW	0.250 - 0.700 - 1.170	0.280 - 0.955 - 1.530	0.260 - 1.460 - 2.050	0.310 - 1.565 - 2.640
	Running Current [Rated]	A	3.5	4.4	6.5	7.0
Airflow	Airflow (Cooling/Heating)	L/s	67 - 175 / 67 - 198	67 - 175 / 67 - 212	97 - 172 / 92 - 212	97 - 183 / 107 - 220
Indoor Unit	Dimensions (H x W x D)	mm	299 x 885 x 195	299 x 885 x 195	299 x 885 x 195	299 x 885 x 195
	Unit Weight	kg	11.5	11.5	11.5	11.5
	Noise Level (SPL) - in Cooling	dB(A)	21-23-29-36-42	21-24-29-36-42	28-31-35-39-42	30-33-36-40-43
	Noise Level (SPL) - in Heating	dB(A)	21-24-29-37-45	21-24-30-38-46	28-30-35-41-48	30-33-37-43-49
Outdoor Unit	Dimensions (H x W x D)	mm	550 x 800 x 285	550 x 800 x 285	550 x 800 x 285	880 x 840 x 330
	Weight	kg	30	35	35	54
	Noise Level (SPL/PWL) - in Cooling	dB(A)	47 / 58	49 / 61	50 / 62	52 / 65
	Noise Level (SPL/PWL) - in Heating	dB(A)	48 / 60	50 / 63	51 / 64	52 / 66
Electrical	Volt / Phase		240/1			
Refrigerant	Pipe Size (Gas) OD	mm (inch)	9.52 (3/8)	9.52 (3/8)	9.52 (3/8)	12.7 (1/2)
	Pipe Size (Liquid) OD	mm (inch)	6.35 (1/4)	6.35 (1/4)	6.35 (1/4)	6.35 (1/4)
	Max Pipe Run/Height	m	20/12	20/12	20/12	30/15
	Pre-Charged Refrigerant	kg	0.8 (7m)	1.15 (7m)	1.15 (7m)	1.45 (7m)
	Add. Charge	g/m	30	30	30	20
	Outdoor - Cooling	°CDB	-10 ~ 46			
	Outdoor - Heating	°CDB	-15 ~ 24			
MCA	A		7.3	8.5	9.5	12.4
Breaker Size	A		10	10	10	16

Notes:

- *1 Nominal conditions cooling: EAT 27°CDB/19°CWB, Ambient 35°CDB. Rated conditions cooling: EAT. 24°CDB/17°CWB, ambient 35°CDB. Nominal conditions heating: EAT 20°CDB/15°CWB, Ambient 7°CDB/6°CWB.
- *2 Rated Load Amps (RLA) is based on nominal conditions. Use Maximum Circuit Amps (MCA) for power supply infrastructure sizing etc.

(Rating Conditons)

Cooling: Indoor 27°C, D.B./19°C, W.B.
Outdoor 35°C, D.B./24°C, W.B.

Heating: Indoor 20°C, D.B./15°C, W.B.
Outdoor 7°C, D.B./6°C, W.B.



MUZ-EF25/35/42

MUZ-EF50

Mitsubishi Electric is constantly developing and improving its products. The company reserves the right to make any variation in the technical specification to the equipment described, or to withdraw or replace products without prior notification.

This is a guide only, please refer to the installation and service manuals to confirm the latest specifications or contact your local Mitsubishi Electric office.

SPECIFICATIONS

SERIES			MSZ-AP Series						
Model			MSZ-AP25VG(D*) MUZ-AP25VG(D*)	MSZ-AP35VG(D*) MUZ-AP35VG(D*)	MSZ-AP42VG(D*) MUS-AP42VG(D*)	MSZ-AP50VG(D*) MSZ-AP50VG(D*)	MSZ-AP60VG(D*) MSZ-AP60VG(D*)	MSZ-G71VG(D*) MSZ-AP71VG(D*)	MSZ-AP80VG(D*) MSZ-AP80VG(D*)
Cooling Performance	Nominal Total Cooling*1	kW	2.5 (1.1 - 3.6)	3.5 (1.1 - 4.1)	4.2 (0.9 - 4.8)	5.0 (1.4 - 6.2)	6.0 1.4 - 7.3)	7.1 (2.0 - 8.7)	7.8 (2.0 - 9.2)
	AEER/EER		4.97 / 5.00	4.01 / 4.02	3.52 / 3.53	3.78 / 3.79	3.77 / 3.77	3.53 / 3.53	3.30 / 3.31
	Star Rating		5.5	3.5	2.5	3.0	3.0	2.5	2.0
	Total Input [Min-Rated-Max]	kW	0.21 - 0.50 - 0.99	0.21 - 0.87 - 1.18	0.15 - 1.19 - 1.90	0.30 - 1.32 - 2.23	0.24 - 1.59 - 2.35	0.43 - 2.01 - 3.03	0.43 - 2.36 - 3.20
	Running Current [Rated]	A	2.6	4.1	5.3	5.9	7.1	8.8	10.8
Heating Performance	Nominal Heating Capacity* 1	kW	3.2 (1.3 - 5.0)	3.7 (1.3 - 5.1)	5.4 (1.3- 6.0)	6.0 (1.4 - 8.0)	6.8 (2.0 - 8.6)	8.0 (2.2 - 9.9)	9.0 (2.2 - 11.0)
	ACOP/COP		4.75 / 4.75	4.55 / 4.57	3.77 / 3.78	3.70 / 3.70	4.06 / 4.07	3.82 / 3.83	3.53 / 3.53
	Star Rating		5.0	4.5	3.0	3.0	3.5	3.0	2.5
	Total Input [Min-Rated-Max]	kW	0.35 - 0.67 - 1.4	0.35 - 0.81 - 1.42	0.26 - 1.43 - 1.90	0.30 - 1.62 - 3.00	0.30 - 1.67 - 2.60	0.42 - 2.09 - 3.25	0.42 - 2.55 - 3.65
	Running Current [Rated]	A	3.3	3.8	6.3	7.1	7.4	9.1	11.3
Airflow	Airflow (Cooling/Heating)	L/s	82 - 205 / 82 - 190	82 - 223 / 82 - 215	90 - 223 / 88 - 233	100 - 258 / 93 - 268	156 - 315 / 180 - 338	160 - 310 / 133 - 320	160 - 343 / 133 - 320
Indoor Unit	Dimensions (H x W x D)	mm	299 x 798 x 219	299 x 798 x 219	299 x 798 x 219	299 x 798 x 219	299 x 1100 x 257	299 x 1100 x 257	299 x 1100 x 257
	Unit Weight	kg	10.5	10.5	10.5	10.5	16	17	17
	Noise Level (SPL) - in Cooling	dB(A)	19-24-31-38-44	19-24-31-38-45	26-29-35-40-46	28-33-39-44-49	29-37-41-45-48	30-37-41-45-49	30-37-41-45-53
	Noise Level (SPL) - in Heating	dB(A)	18-25-31-38-42	19-25-31-38-45	26-29-35-40-46	28-33-38-43-48	29-37-41-45-48	30-37-41-45-51	30-37-41-45-51
Outdoor Unit	Dimensions (H x W x D)	mm	550 x 800 x 285	550 x 800 x 285	550 x 800 x 285	714 x 800 x 285	714 x 800 x 285	880 x 840 x 330	880 x 840 x 330
	Weight	kg	34/35	34/35	35/36	40/41	40/41	55	55
	Noise Level (SPL/PWL) - in Cooling	dB(A)	46 / 59	50 / 64	51 / 65	54 / 69	55 / 69	56 / 69	56 / 69
	Noise Level (SPL/PWL) - in Heating	dB(A)	49 / 59	50 / 64	52 / 65	56 / 69	57 / 69	55 / 69	55 / 69
Electrical	Volt / Phase		230/1						
Refrigerant	Pipe Size (Gas) OD	mm (inch)	9.52 (3/8)	9.52 (3/8)	9.52 (3/8)	12.7 (1/2)	12.7(1/2)	12.7(1/2)	12.7(1/2)
	Pipe Size (Liquid) OD	mm (inch)	6.35 (1/4)	6.35 (1/4)	6.35 (1/4)	6.35 (1/4)	6.35 (1/4)	6.35 (1/4)	6.35 (1/4)
	Max Pipe Run/Height	m	20/12	20/12	20/12	20/12	30/15	30/15	30/15
	Pre-Charged Refrigerant	kg	0.97 (10m)	0.97 (10m)	0.97 (10m)	1.2 (15m)	1.25 (15m)	1.5 (15m)	1.5 (15m)
	Add. Charge	g/m	20	20	20	20	20	20	20
	Outdoor - Cooling	°CDB	-10 ~ 46						
	Outdoor - Heating	°CDB	-15 ~ 24						
MCA		A	7.0	7.1	9.9	14.0	14.0	16.4	16.5
Breaker Size		A	10	10	10	16	16	20	20

Notes:

- *1 Nominal conditions cooling: EAT 27°CDB/19°CWB, Ambient 35°CDB. Rated conditions cooling: EAT 24°CDB/17°CWB, ambient 35°CDB.
Nominal conditions heating: EAT 20°CDB/15°CWB, Ambient 7°CDB/6°CWB.
- *2 Rated Load Amps (RLA) is based on nominal conditions. Use Maximum Circuit Amps (MCA) for power supply infrastructure sizing, etc.
- (D*) represents DRED enabled model. This is only available in QLD.
- Multi-split system compatibility with model numbers MXZ-*E**VAD2-A1 only.

(Rating Conditons)

Cooling: Indoor 27°C, D.B./19°C, W.B.
Outdoor 35°C, D.B./24°C, W.B.

Heating: Indoor 20°C, D.B./15°C, W.B.
Outdoor 7°C, D.B./6°C, W.B.



MUZ-AP25/35/42



MUZ-AP50/60



MUZ-AP71/80

Mitsubishi Electric is constantly developing and improving its products. The company reserves the right to make any variation in the technical specification to the equipment described, or to withdraw or replace products without prior notification.

This is a guide only, please refer to the installation and service manuals to confirm the latest specifications or contact your local Mitsubishi Electric office.

SPECIFICATIONS

SERIES			MFZ-KJ Series			
Model			MFZ-KJ25VE MUFZ-KJ25VE	MFZ-KJ35VE MUFZ-KJ35VE	MFZ-KJ50VE MUFZ-KJ50VE	MFZ-KJ60VE MUFZ-KJ60VE
Cooling Performance	Nominal Total Cooling *1 ¹	kW	2.5 (0.5-3.4)	3.5 (0.5-3.7)	5.0 (1.6-5.7)	6.0 (1.6-6.8)
	AEER/EER		4.62 / 4.63	3.88 / 3.89	3.56 / 3.57	3.42 / 3.43
	Star Rating		5.0	3.0	2.5	2.0
	Total Input [Min-Rated-Max]	kW	0.15 - 0.54 - 0.91	0.15 - 0.90 - 1.14	0.43 - 1.40 - 1.97	0.43 - 1.75 - 2.40
	Running Current [Rated]	A	2.7	4.2	6.2	7.8
Heating Performance	Nominal Heating Capacity * 1	kW	3.4 (1.2-4.6)	4.3 (1.2-5.8)	5.8 (2.2-8.2)	6.8 (2.2-9.1)
	ACOP/COP		4.41/4.42	3.90/3.91	3.86/3.87	3.59/3.60
	Star Rating		4.0	3.0	3.0	2.5
	Total Input [Min-Rated-Max]	kW	0.36 - 0.77 - 1.40	0.36 - 1.10 - 2.20	0.58 - 1.50 - 3.06	0.58 - 1.89 - 3.70
	Running Current [Rated]	A	3.7	5.0	6.7	8.4
Airflow	Airflow (Cooling/Heating)	L/s	65-137/65-162	65-137/65-162	93-177/100-233	93-250/100-243
Indoor Unit	Dimensions (H x W x D)	mm	600 x750 x 215	600 x750 x 215	600 x750 x 215	600 x750 x 215
	Unit Weight	kg	15	15	15	15
	Noise Level (SPL) - in Cooling	dB(A)	20 - 39	20 - 39	27 - 44	27-53
	Noise Level (SPL) - in Heating	dB(A)	19-41	19-41	29-50	29-51
Outdoor Unit	Dimensions (H x W x D)	mm	550 x 800 x 285	550 x 800 x 285	880 x 840 x330	880 x 840 x330
	Weight	kg	37	37	55	55
	Noise Level (SPL/PWL) - in Cooling	dB(A)	46/59	47/60	49/63	52/65
	Noise Level (SPL/PWL) - in Heating	dB(A)	51/62	51/63	52/63	53/65
Electrical	Volt / Phase		230/1			
Refrigerant	Pipe Size (Gas) OD	mm (inch)	9.52 (3/8)	9.52 (3/8)	12.7 (1/2)	12.7 (1/2)
	Pipe Size (Liquid) OD	mm (inch)	6.35 (1/4)	6.35 (1/4)	6.35 (1/4)	6.35 (1/4)
	Max Pipe Run/Height	m	20/12	20/12	30/15	30/15
	Pre-Charged Refrigerant	kg	1.1 (7m)	1.1 (7m)	1.5 (7m)	1.5 (7m)
	Add. Charge	g/m	30	30	20	20
	Outdoor - Cooling	°CDB	-10 ~ 46	-10 ~ 46	-10 ~ 46	-10 ~ 46
	Outdoor - Heating	°CDB	-15 ~ 24	-15 ~ 24	-15 ~ 24	-15 ~ 24
MCA		A	9.4	9.4	14.0	16.5
Breaker Size		A	10	10	16	20

Notes:

*1 Nominal conditions cooling: EAT 27°CDB/19°CWB, Ambient 35°CDB. Rated conditions cooling: EAT 24°CDB/17°CWB, ambient 35°CDB.
Nominal conditions heating: EAT 20°CDB/15°CWB, Ambient 7°CDB/6°CWB.

*2 Rated Load Amps (RLA) is based on nominal conditions. Use Maximum Circuit Amps (MCA) for power supply infrastructure sizing, etc.

(Rating Conditons)

Cooling: Indoor 27°C, D.B./19°C, W.B.
Outdoor 35°C, D.B./24°C, W.B.
Heating: Indoor 20°C, D.B./15°C, W.B.
Outdoor 7°C, D.B./6°C, W.B.



MUFZ-KJ-25/35



MUFZ-KJ-50/60

Mitsubishi Electric is constantly developing and improving its products. The company reserves the right to make any variation in the technical specification to the equipment described, or to withdraw or replace products without prior notification.

This is a guide only, please refer to the installation and service manuals to confirm the latest specifications or contact your local Mitsubishi Electric office.

SPECIFICATIONS

SERIES			Compact Ceiling Cassette SLZ Series			
Model			SLZ-KF25VA3 SUZ-KA25VAD2	SLZ-KF35VA3 SUZ-KA35VAD2	SLZ-KF50VA3 SUZ-KA50VAD2	SLZKF-60VA3 SUZ-KA60VAD2
Cooling Performance	Nominal Total Cooling*1	kW	2.5 (1.5 - 3.2)	3.5 (1.4 - 3.9)	5.0 (2.3 - 5.2)	5.6 (2.3 - 6.5)
	AEER/EER		3.73 / 3.85	3.61 / 3.68	3.21 / 3.27	3.16 / 3.20
	Total Input (Rated)	kW	0.65	0.95	1.53	1.75
Heating Performance	Nominal Heating Capacity*1	kW	3.0 (1.3 - 4.5)	4.0 (1.7 - 5.0)	5.0 (1.7 - 6.5)	6.0 (2.5 - 7.4)
	ACOP/COP		3.75 / 3.85	3.63 / 3.7	3.11 / 3.16	3.15 / 3.19
	Total Input (Rated)	kW	0.78	1.08	1.58	1.88
Airflow	Airflow (Cooling/Heating)	L/s	108 - 125 - 142	108 - 150 - 192	117 - 150 - 192	125 - 192 - 217
	Ext. Static Pressure	Pa	-	-	-	-
Indoor Unit	Dimensions (H x W x D)	mm	245 x 570 x 570	245 x 570 x 570	245 x 570 x 570	245 x 570 x 570
	Panel Dimensions (H x W x D)	mm	10 x 625 x 625	10 x 625 x 625	10 x 625 x 625	10 x 625 x 625
	Supply Spigot Size (H x W x D)	mm	-	-	-	-
	Return Spigot Size (H x W x D)	mm	-	-	-	-
	Unit Weight	kg (Panel)	15 (3)	15 (3)	15 (3)	15 (3)
	Noise Level (SPL) - in Cooling/Heating	dB(A)	25 - 28 - 31	25 - 33 - 39	27 - 34 - 39	32 - 40 - 43
Outdoor Unit	Dimensions (H x W x D)	mm	550 x 800 x 285	550 x 800 x 285	880 x 840 x 330	880 x 840 x 330
	Weight	kg	30	33	53	50
	Noise Level (SPL/ PWL) - in Cooling	dB(A)	46 (59)	47 (61)	53 (68)	55 (69)
	Noise Level (SPL/ PWL) - in Heating	dB(A)	46 (59)	48 (62)	55 (69)	55 (69)
Electrical	Volt / Phase		SinAPe-Phase, 50Hz, 230V			
	MCA	A	8.16	9.18	16	14
	MCB	A	10	10	20	20
	RLA (Cooling/Heating)*2	A	3.5 / 3.9	5.0 / 5.2	7.4 / 8.2	7.9 / 8.7
Guaranteed Operating Range	Outdoor - Cooling	°CDB	-10 ~ 46	-10 ~ 46	-15 ~ 43	-15 ~ 46
	Outdoor - Heating	°CDB	-15 ~ 24	-15 ~ 24	-15 ~ 24	-15 ~ 24
Refrigerant	Pipe Size Gas (OD)	mm	9.52 (3/8)	9.52 (3/8)	12.7 (1/2)	15.88 (1/2)
	Pipe Size Liquid (OD)	mm	6.35 (1/4)	6.35 (1/4)	6.35 (1/4)	6.35 (1/4)
	Max Pipe Run	m	20	20	30	30
	Max Lift	m	12	12	30	30
	Pre-Charged R410a	kg	0.8 (5.0m)	1.05 (5.0m)	1.6 (7.0m)	1.8 (7.0m)
	Add. Charge	g/m	30	30	20	20

Optional Parts	
System Control Interface	MAC-33IF-E
Wi-Fi Interface	MAC-568IF-E
Remote Sensor	PAC-SE41TS-E
Remote On/Off Adapter	PAC-SE55RA-E
Connector Cable for Remote Display	PAC-SA88HA-E

Controller	
Wired Remote Controller	PAR-33MAA
	PAC-YT52CRA
	PAR-CT01MAA
Wireless Remote Controller	PAR-SL97A-E
	PAR-SL00A

Mitsubishi Electric is constantly developing and improving its products. The company reserves the right to make any variation in the technical specification to the equipment described, or to withdraw or replace products without prior notification.

This is a guide only, please refer to the installation and service manuals to confirm the latest specifications or contact your local Mitsubishi Electric office.

Panel & Corner Panel				
		With Signal Receiver	With 3D i-See Sensor	With NEW Wireless Remote Controller
Panel	SLP-2FA			
	SLP-2FAL	✓		
	SLP-2FAE		✓	
	SLP-2FALE	✓	✓	
	SLP-2FALM	✓		✓
	SLP-2FALME	✓	✓	✓
Corner Panel	PAR-SF9FA-E	✓		
	PAC-SF1ME-E		✓	



SUZ-KD25/35VAD
SUZ-KA25/35VAD2

SUZ-KD50VAD
SUZ-KA25/35VAD2

SUZ-KD60/71VAD
SUZ-KA25/35VAD2



SPECIFICATIONS

SERIES			Compact Ceiling Concealed SEZ Series				
Model			SEZ-KD25VAQ/L SUZ-KA25VAD	SEZ-KD35VAQ/L SUZ-KA35VAD	SEZ-KD50VAQ/L SUZ-KA50VAD	SEZ-KD60VAQ/L SUZ-KA60VAD	SEZ-KD71VAQ/L SUZ-KA71VAD
Cooling Performance	Nominal Total Cooling *1	kW	2.5 (1.5 - 3.2)	3.7 (1.4 - 3.9)	5.1 (2.3 - 5.6)	5.6 (2.3 - 6.3)	6.5 (2.8 - 6.3)
	AEER/EER		3.21 / 3.33	3.31 / 3.39	3.05 / 3.11	3.11 / 3.16	3.10 / 3.16
	Star Rating		-	-	-	-	-
Heating Performance	Nominal Heating Capacity *1	kW	3.0 (1.3 - 4.5)	4.2 (1.7 - 5.0)	6.4 (1.7 - 7.2)	7.4 (2.5 - 8.0)	8.1 (2.6 - 10.4)
	ACOP/COP		3.49 / 3.61	3.62 / 3.72	3.48 / 3.54	3.55 / 3.61	3.66 / 3.72
	Star Rating		-	-	-	-	-
Airflow	Airflow (Cooling/ Heating)	L/s	92 - 117 - 150	117 - 150 - 183	167 - 208 - 250	200 - 250 - 300	200 - 267 - 333
	Ext. Static Pressure	Pa	5 - 15 - 35 - 50	5 - 15 - 35 - 50	5 - 15 - 35 - 50	5 - 15 - 35 - 50	5 - 15 - 35 - 50
Indoor Unit	Dimensions (H x W x D)	mm	200 x 790 x 700	200 x 990 x 700	200 x 990 x 700	200 x 1190 x 700	200 x 1190 x 700
	Supply Spigot Size (H x W)	mm	150 x 660	150 x 860	150 x 860	150 x 1060	150 x 1060
	Return Spigot Size (H x W)	mm	157.5 x 660	157.5 x 860	157.5 x 860	157.5 x 1060	157.5 x 1060
	Unit Weight	kg	18	21	23	27	27
	Noise Level (SPL/PWL) - in Cooling	dB(A)	23 - 26 - 30	23 - 28 - 33	30 - 34 - 37	30 - 34 - 38	30 - 35 - 40
Outdoor Unit	Dimensions (H x W x D)	mm	550 x 800 x 285	550 x 800 x 285	850 x 840 x 330	880 x 840 x 330	880 x 840 x 330
	Weight	kg	30	33	53	50	53
	Noise Level (SPL/PWL) - in Cooling	dB(A)	46 (59)	47 (61)	53 (68)	55 (69)	55 (69)
Electrical	Volt / Phase		240/1				
	MCA	A	8.16	9.18	16	14	16.1
	MCB	A	10	10	20	20	20
	RLA (Cooling/ Heating) *2	A	3.5 / 3.9	5.0 / 5.2	7.4 / 8.2	7.9 / 8.7	9.1 / 9.7
	Power Supply to OU *3		3C	3C	3C	3C	3C
	IU/OU Connecting Wire		SDI + TPS (2C+E) *4	SDI + TPS (2C+E) *4	SDI + TPS (2C+E) *4	SDI + TPS (2C+E) *4	SDI + TPS (2C+E) *4
Refrigerant	Pipe Size (Gas) OD	mm (Inch)	9.52 (3/8)	9.52 (3/8)	12.7 (1/2)	15.88 (5/8)	15.88 (5/8)
	Pipe Size (Liquid) OD	mm (Inch)	6.35 (1/4)	6.35 (1/4)	6.35 (1/4)	6.35 (1/4)	9.52 (3/8)
	Max Pipe Run	m	20	20	30	30	30
	Max Lift	m	12	12	30	30	30
	Pre-Charged R410A	kg	0.8 (5.0 m)	1.05 (5.0 m)	1.6 (7.0 m)	1.8 (7.0 m)	1.8 (7.0 m)
	Add. Charge	g/m	30	30	20	20	55
Others	Drain Pumps		Optional*5	Optional*5	Optional*5	Optional*5	Optional*5
	Standard Accessories		VAL includes wireless control*9	VAL includes wireless control*9	VAL includes wireless control*9	VAL includes wireless control*9	VAL includes wireless control*9
Guaranteed Operating Range	Indoor - Cooling	°CDB/ °CWB	21/15 ~ 32/23				
	Indoor - Heating	°CDB	20 ~ 27				
	Outdoor - Cooling	°CDB	-10 ~ 46		-15 ~ 43	-15 ~ 46	
	Outdoor - Heating	°CDB	-15 ~ 24		-15 ~ 24	-15 ~ 24	

Notes:

- *1 Nominal conditions cooling: EAT 27°CDB/19°CWB, Ambient 35°CDB. Rated conditions cooling: EAT 24°CDB/17°CWB, ambient 35°CDB.
Nominal conditions heating: EAT 20°CDB/15°CWB, Ambient 7°CDB/6°CWB.
- *2 Rated Load Amps (RLA) is based on nominal conditions. Use Maximum Circuit Amps. (MCA) for power supply infrastructure sizing, etc.
- *3 Optional drain pump for SEZ series: PAC-KE07DM-E.
- *4 Grille for SLZ-KA VAL series (wireless option): SLP-2ALW. Grille for SLZ-KA VAQ series (wired option): SLP-2AAW (add wired controller PAR-33MAA or PAC-YT52CRA).
- *5 For VAQ model, add wired controller PAR-33MAA or PAC-YT52CRA.

(Rating Conditions)

Cooling: Indoor 27°C, D.B./19°C, W.B.
Outdoor 35°C, D.B./24°C, W.B.

Heating: Indoor 20°C, D.B./15°C, W.B.
Outdoor 7°C, D.B./6°C, W.B.

For further information visit
www.plumheatcool.com.au
or call 8360 9622

Plum Heating & Cooling
Unit 4, 22-30 Wallace Avenue
Point Cook, Victoria, 3030

Products in this brochure contain refrigerant R32. Please refer to the specifications before installation and servicing of these products. The purchaser must ensure that the person and/or companies are suitably licensed and experienced are permitted to install, service and repair the air conditioners. Suitable access for warranty and service is required. Specifications, designs and other content appearing in this brochure is current at the time of printing, and is subject to change without notice. Images are representational for illustration purposes. PRINTED: MARCH 2019.